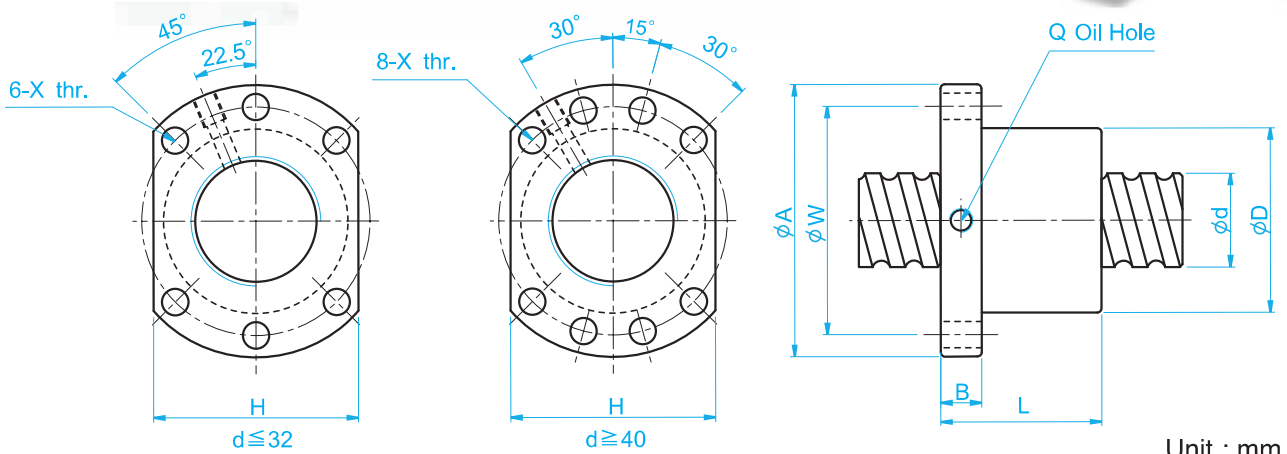


Dimension Table of TBI MOTION Ball Screws TYPE SFU (DIN69051 FORM B)



Unit : mm

l: Lead Da: Ball Dia. n: Number of Circuits K: Stiffness (Kgf/μm)
Ca: Basic Dynamic Rating Load (Kgf) Coa: Basic Static Rating Load(Kgf)

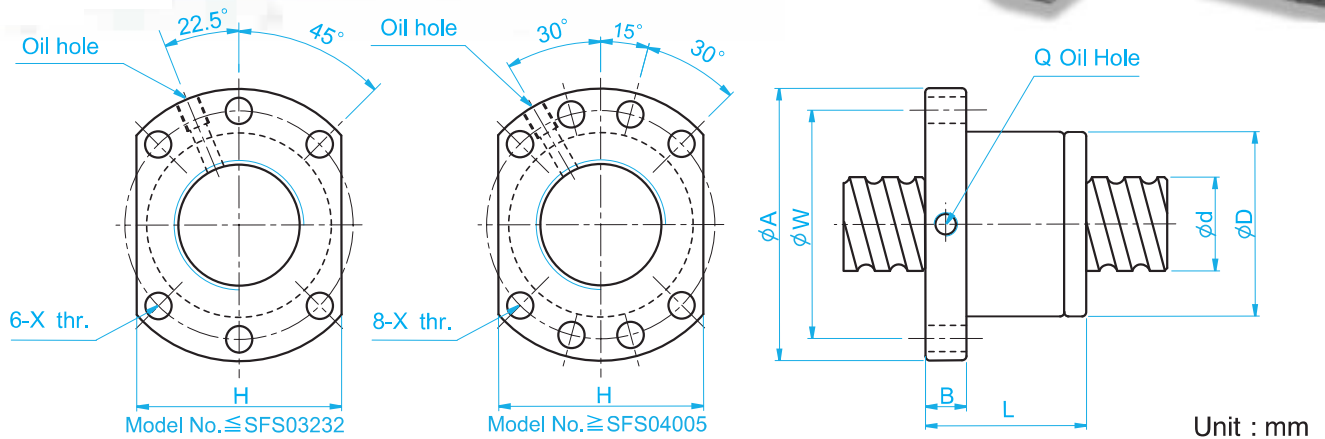
| Model No. | Dimensions | | | | | | | | | | | | | | |
|--------------|------------|-------|-------|-----|-----|----|-----|-----|------|-----|-----|------|-------|-------|-----|
| | d | l | Da | D | A | B | L | W | X | H | Q | n | Ca | Coa | K |
| ★ SFU01204-4 | 12 | 4 | 2.5 | 24 | 40 | 10 | 40 | 32 | 4.5 | 30 | | 1x4 | 902 | 1884 | 26 |
| ★ SFU01604-4 | 16 | 4 | 2.381 | 28 | 48 | 10 | 40 | 38 | 5.5 | 40 | M6 | 1x4 | 973 | 2406 | 32 |
| ★ SFU01605-4 | | 5 | 3.175 | 28 | 48 | 10 | 50 | 38 | 5.5 | 40 | M6 | 1x4 | 1380 | 3052 | 32 |
| ★ SFU01610-3 | 10 | 3.175 | 28 | 48 | 10 | 57 | 38 | 5.5 | 40 | M6 | 1x3 | 1103 | 2401 | 26 | |
| ★ SFU02004-4 | 20 | 4 | 2.381 | 36 | 58 | 10 | 42 | 47 | 6.6 | 44 | M6 | 1x4 | 1066 | 2987 | 38 |
| ★ SFU02005-4 | | 5 | 3.175 | 36 | 58 | 10 | 51 | 47 | 6.6 | 44 | M6 | 1x4 | 1551 | 3875 | 39 |
| ★ SFU02504-4 | 25 | 4 | 2.381 | 40 | 62 | 10 | 42 | 51 | 6.6 | 48 | M6 | 1x4 | 1180 | 3795 | 43 |
| ★ SFU02505-4 | | 5 | 3.175 | 40 | 62 | 10 | 51 | 51 | 6.6 | 48 | M6 | 1x4 | 1724 | 4904 | 45 |
| ★ SFU02506-4 | | 6 | 3.969 | 40 | 62 | 10 | 54 | 51 | 6.6 | 48 | M6 | 1x4 | 2318 | 6057 | 47 |
| ★ SFU02508-4 | | 8 | 4.762 | 40 | 62 | 10 | 63 | 51 | 6.6 | 48 | M6 | 1x4 | 2963 | 7313 | 49 |
| ★ SFU02510-4 | 10 | 4.762 | 40 | 62 | 12 | 85 | 51 | 6.6 | 48 | M6 | 1x4 | 2954 | 7295 | 50 | |
| ★ SFU03204-4 | 32 | 4 | 2.381 | 50 | 80 | 12 | 44 | 65 | 9 | 62 | M6 | 1x4 | 1296 | 4838 | 51 |
| ★ SFU03205-4 | | 5 | 3.175 | 50 | 80 | 12 | 52 | 65 | 9 | 62 | M6 | 1x4 | 1922 | 6343 | 54 |
| ★ SFU03206-4 | | 6 | 3.969 | 50 | 80 | 12 | 57 | 65 | 9 | 62 | M6 | 1x4 | 2632 | 7979 | 57 |
| ★ SFU03208-4 | | 8 | 4.762 | 50 | 80 | 12 | 65 | 65 | 9 | 62 | M6 | 1x4 | 3387 | 9622 | 60 |
| ★ SFU03210-4 | | 10 | 6.35 | 50 | 80 | 12 | 90 | 65 | 9 | 62 | M6 | 1x4 | 4805 | 12208 | 61 |
| ★ SFU04005-4 | 40 | 5 | 3.175 | 63 | 93 | 14 | 55 | 78 | 9 | 70 | M8 | 1x4 | 2110 | 7988 | 63 |
| ★ SFU04006-4 | | 6 | 3.969 | 63 | 93 | 14 | 60 | 78 | 9 | 70 | M6 | 1x4 | 2873 | 9913 | 66 |
| ★ SFU04008-4 | | 8 | 4.762 | 63 | 93 | 14 | 67 | 78 | 9 | 70 | M6 | 1x4 | 3712 | 11947 | 70 |
| ★ SFU04010-4 | | 10 | 6.35 | 63 | 93 | 14 | 93 | 78 | 9 | 70 | M8 | 1x4 | 5399 | 15500 | 73 |
| ★ SFU05010-4 | 50 | 10 | 6.35 | 75 | 110 | 16 | 93 | 93 | 11 | 85 | M8 | 1x4 | 6004 | 19614 | 85 |
| ★ SFU05020-4 | | 20 | 7.144 | 75 | 110 | 16 | 138 | 93 | 11 | 85 | M8 | 1x4 | 7142 | 22588 | 94 |
| ★ SFU06310-4 | 63 | 10 | 6.35 | 90 | 125 | 18 | 98 | 108 | 11 | 95 | M8 | 1x4 | 6719 | 25358 | 99 |
| ★ SFU06320-4 | | 20 | 9.525 | 95 | 135 | 20 | 149 | 115 | 13.5 | 100 | M8 | 1x4 | 11444 | 36653 | 112 |
| ★ SFU08010-4 | 80 | 10 | 6.35 | 105 | 145 | 20 | 98 | 125 | 13.5 | 110 | M8 | 1x4 | 7346 | 31953 | 109 |
| ★ SFU08020-4 | | 20 | 9.525 | 125 | 165 | 25 | 154 | 145 | 13.5 | 130 | M8 | 1x4 | 12911 | 47747 | 138 |
| ★ SFU10020-4 | 100 | 20 | 9.525 | 150 | 202 | 30 | 180 | 170 | 17.5 | 155 | M8 | 1x4 | 14303 | 60698 | 162 |

Note: with sign ★ can be produced in left helix

Dimension Table of TBI MOTION Ball Screws

TYPE SFS (DIN69051 FORM B)

High-Speed Ball Screw

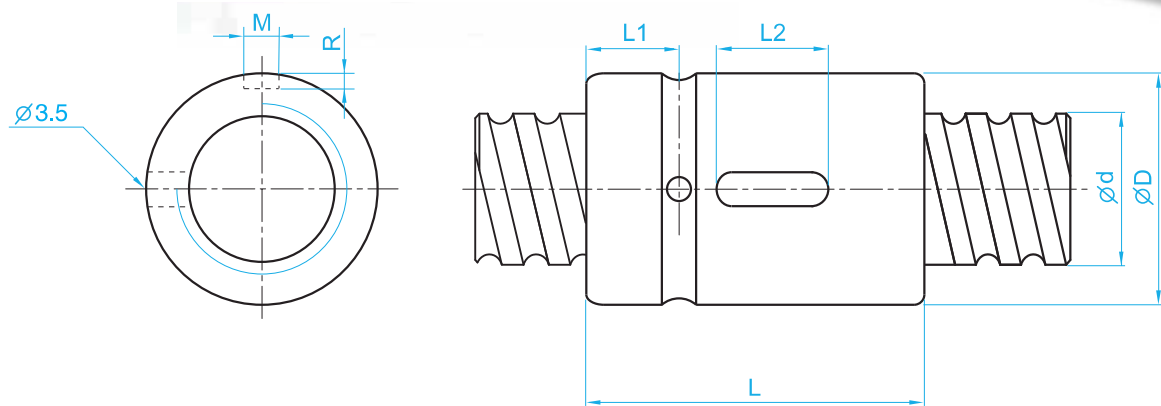


l: Lead Da: Ball Dia. n: Number of Circuits K: Stiffness (Kgf/ μ m)
 Ca: Basic Dynamic Rating Load (Kgf) Coa: Basic Static Rating Load (Kgf)

| Model No. | Dimensions | | | | | | | | | | | | | | | |
|--------------|------------|----|-------|-------|-----|-----|------|-----|-----|------|-----|-------|-------|-------|-------|----|
| | d | l | Da | D | A | B | L | W | H | X | Q | n | Ca | Coa | K | |
| SFS01205-2.8 | 12 | 5 | 2.5 | 24 | 40 | 10 | 31 | 32 | 30 | 4.5 | | 2.8x1 | 661 | 1316 | 19 | |
| SFS01210-2.8 | | 10 | 2.5 | 24 | 40 | 10 | 48.5 | 32 | 30 | 4.5 | | 2.8x1 | 642 | 1287 | 19 | |
| SFS01605-3.8 | 15 | 5 | 2.778 | 28 | 48 | 10 | 38 | 38 | 40 | 5.5 | M6 | 3.8x1 | 1112 | 2507 | 30 | |
| SFS01610-2.8 | | 10 | 2.778 | 28 | 48 | 10 | 47 | 38 | 40 | 5.5 | M6 | 2.8x1 | 839 | 1821 | 23 | |
| SFS01616-1.8 | | 16 | 2.778 | 28 | 48 | 10 | 45 | 38 | 40 | 5.5 | M6 | 1.8x1 | 552 | 1137 | 14 | |
| SFS01616-2.8 | | 16 | 2.778 | 28 | 48 | 10 | 61 | 38 | 40 | 5.5 | M6 | 2.8x1 | 808 | 1769 | 22 | |
| SFS01620-1.8 | | 20 | 2.778 | 28 | 48 | 10 | 57 | 38 | 40 | 5.5 | M6 | 1.8x1 | 554 | 1170 | 14 | |
| SFS02005-3.8 | | 20 | 5 | 3.175 | 36 | 58 | 10 | 40 | 47 | 44 | 6.6 | M6 | 3.8x1 | 1484 | 3681 | 37 |
| SFS02006-4.8 | 6 | | 3.175 | 36 | 58 | 10 | 50 | 47 | 44 | 6.6 | M6 | 4.8x1 | 1811 | 4644 | 47 | |
| SFS02008-4.8 | 8 | | 3.175 | 36 | 58 | 10 | 60 | 47 | 44 | 6.6 | M6 | 4.8x1 | 1863 | 4861 | 50 | |
| SFS02010-3.8 | 10 | | 3.175 | 36 | 58 | 10 | 60 | 47 | 44 | 6.6 | M6 | 3.8x1 | 1516 | 3833 | 40 | |
| SFS02020-1.8 | 20 | | 3.175 | 36 | 58 | 10 | 57 | 47 | 44 | 6.6 | M6 | 1.8x1 | 764 | 1758 | 19 | |
| SFS02020-2.8 | 20 | | 3.175 | 36 | 58 | 10 | 77 | 47 | 44 | 6.6 | M6 | 2.8x1 | 1118 | 2734 | 29 | |
| SFS02505-3.8 | 25 | 5 | 3.175 | 40 | 62 | 10 | 40 | 51 | 48 | 6.6 | M6 | 3.8x1 | 1650 | 4658 | 43 | |
| SFS02506-4.8 | | 6 | 3.175 | 40 | 62 | 10 | 50 | 51 | 48 | 6.6 | M6 | 4.8x1 | 2015 | 5879 | 55 | |
| SFS02508-4.8 | | 8 | 3.175 | 40 | 62 | 10 | 60 | 51 | 48 | 6.6 | M6 | 4.8x1 | 2009 | 5867 | 56 | |
| SFS02510-3.8 | | 10 | 3.175 | 40 | 62 | 12 | 62 | 51 | 48 | 6.6 | M6 | 3.8x1 | 1638 | 4633 | 45 | |
| SFS02525-1.8 | | 25 | 3.175 | 40 | 62 | 12 | 70 | 51 | 48 | 6.6 | M6 | 1.8x1 | 843 | 2199 | 22 | |
| SFS02525-2.8 | | 25 | 3.175 | 40 | 62 | 12 | 95 | 51 | 48 | 6.6 | M6 | 2.8x1 | 1232 | 3421 | 34 | |
| SFS03205-3.8 | 32 | 5 | 3.175 | 50 | 80 | 12 | 42 | 65 | 62 | 9 | M6 | 3.8x1 | 1839 | 6026 | 51 | |
| SFS03206-4.8 | | 6 | 3.175 | 50 | 80 | 12 | 51 | 65 | 62 | 9 | M6 | 4.8x1 | 2247 | 7608 | 65 | |
| SFS03208-4.8 | | 8 | 3.969 | 50 | 80 | 12 | 62 | 65 | 62 | 9 | M6 | 4.8x1 | 3015 | 9181 | 68 | |
| SFS03210-3.8 | 31 | 10 | 3.969 | 50 | 80 | 13 | 62 | 65 | 62 | 9 | M6 | 3.8x1 | 2460 | 7255 | 55 | |
| SFS03220-2.8 | | 20 | 3.969 | 50 | 80 | 12 | 80 | 65 | 62 | 9 | M6 | 2.8x1 | 1907 | 5482 | 43 | |
| SFS03232-1.8 | | 32 | 3.969 | 50 | 80 | 13 | 84 | 65 | 62 | 9 | M6 | 1.8x1 | 1257 | 3426 | 27 | |
| SFS03232-2.8 | 40 | 32 | 3.969 | 50 | 80 | 13 | 116 | 65 | 62 | 9 | M6 | 2.8x1 | 1838 | 5329 | 42 | |
| SFS04005-3.8 | | 5 | 3.175 | 63 | 93 | 15 | 45 | 78 | 70 | 9 | M8 | 3.8x1 | 2018 | 7589 | 60 | |
| SFS04006-4.8 | | 6 | 3.175 | 63 | 93 | 14 | 50 | 78 | 70 | 9 | M6 | 4.8x1 | 2467 | 9583 | 77 | |
| SFS04008-4.8 | | 8 | 3.969 | 63 | 93 | 14 | 61 | 78 | 70 | 9 | M6 | 4.8x1 | 3327 | 11491 | 81 | |
| SFS04010-3.8 | | 38 | 10 | 6.35 | 63 | 93 | 14 | 63 | 78 | 70 | 9 | M8 | 3.8x1 | 5035 | 13943 | 67 |
| SFS04020-2.8 | | | 20 | 6.35 | 63 | 93 | 14 | 82 | 78 | 70 | 9 | M8 | 2.8x1 | 3959 | 10715 | 54 |
| SFS04040-1.8 | 40 | | 6.35 | 63 | 93 | 15 | 105 | 78 | 70 | 9 | M8 | 1.8x1 | 2585 | 6648 | 34 | |
| SFS04040-2.8 | 50 | 40 | 6.35 | 63 | 93 | 15 | 145 | 78 | 70 | 9 | M8 | 2.8x1 | 3780 | 10341 | 52 | |
| SFS05005-3.8 | | 5 | 3.175 | 75 | 110 | 15 | 45 | 93 | 85 | 11 | M8 | 3.8x1 | 2207 | 9542 | 68 | |
| SFS05010-3.8 | | 48 | 10 | 6.35 | 75 | 110 | 18 | 68 | 93 | 85 | 11 | M8 | 3.8x1 | 5638 | 17852 | 79 |
| SFS05012-3.8 | | | 12 | 6.35 | 75 | 110 | 18 | 75 | 93 | 85 | 11 | M8 | 3.8x1 | 5632 | 17836 | 81 |
| SFS05020-3.8 | | | 20 | 6.35 | 75 | 110 | 18 | 108 | 93 | 85 | 11 | M8 | 3.8x1 | 5749 | 18485 | 87 |
| SFS05050-1.8 | | 61 | 50 | 6.35 | 75 | 110 | 18 | 125 | 93 | 85 | 11 | M8 | 1.8x1 | 2946 | 8749 | 42 |
| SFS05050-2.8 | 50 | | 6.35 | 75 | 110 | 18 | 175 | 93 | 85 | 11 | M8 | 2.8x1 | 4308 | 13610 | 65 | |
| SFS06310-3.8 | 77 | | 10 | 6.35 | 90 | 125 | 18 | 70 | 108 | 95 | 11 | M8 | 3.8x1 | 6343 | 23308 | 94 |
| SFS06316-3.8 | | 16 | 6.35 | 90 | 125 | 18 | 95 | 108 | 95 | 11 | M8 | 3.8x1 | 6327 | 23262 | 100 | |
| SFS06320-3.8 | | 20 | 7.144 | 95 | 135 | 20 | 116 | 115 | 100 | 13.5 | M8 | 3.8x1 | 7493 | 26424 | 105 | |
| SFS08010-3.8 | 96 | 10 | 6.35 | 105 | 145 | 20 | 70 | 125 | 110 | 13.5 | M8 | 3.8x1 | 6980 | 29563 | 105 | |
| SFS08020-3.8 | | 20 | 9.525 | 125 | 165 | 25 | 120 | 145 | 130 | 13.5 | M8 | 3.8x1 | 12145 | 43598 | 128 | |
| SFS10020-3.8 | | 20 | 12.7 | 150 | 202 | 30 | 124 | 176 | 155 | 17.5 | M8 | 3.8x1 | 19633 | 71408 | 152 | |

Note: with sign ★ can be produced in left helix

Dimension Table of TBI MOTION BallScrews TYPE SCI



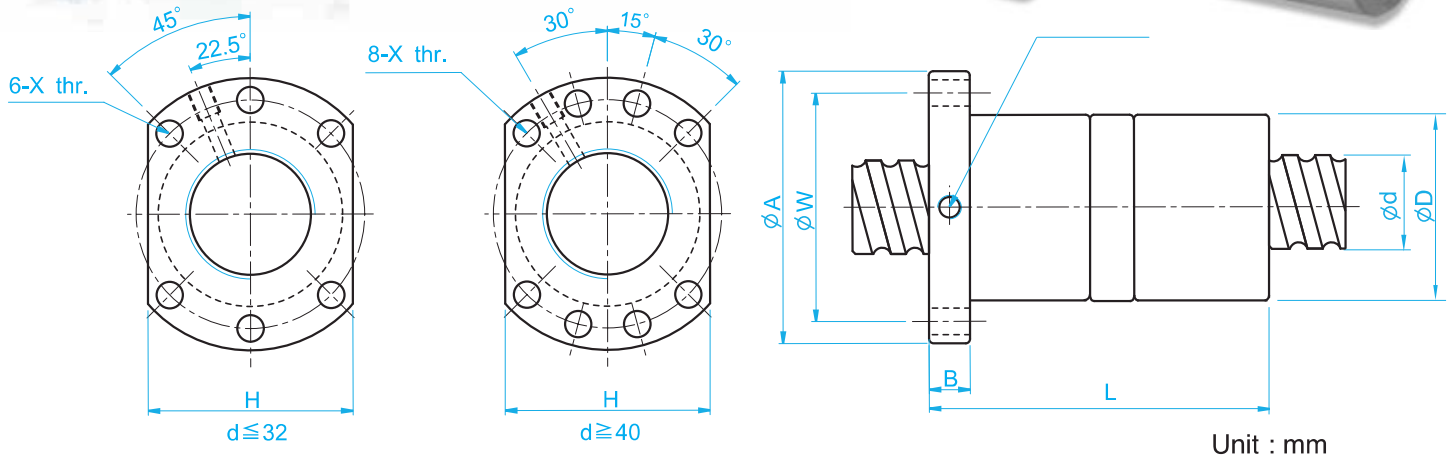
Unit : mm

I: Lead Da: Ball Dia. n: Number of Circuits K: Stiffness (Kgf/μm)
Ca: Basic Dynamic Rating Load (Kgf) Coa: Basic Static Rating Load(Kgf)

| Model No. | Dimensions | | | | | | | | | | | | |
|--------------|------------|----|-------|-----|----|----|----|---|-----|-----|------|-------|-----|
| | d | I | Da | D | L | L1 | L2 | M | R | n | Ca | Coa | K |
| SCI01604-4 | 16 | 4 | 2.381 | 30 | 40 | 9 | 15 | 3 | 1.5 | 1x4 | 973 | 2406 | 32 |
| ★ SCI01605-4 | | 5 | 3.175 | 30 | 45 | 9 | 20 | 5 | 3 | 1x4 | 1380 | 3052 | 33 |
| SCI02004-4 | 20 | 4 | 2.381 | 34 | 40 | 9 | 15 | 3 | 1.5 | 1x4 | 1066 | 2987 | 37 |
| ★ SCI02005-4 | | 5 | 3.175 | 34 | 45 | 9 | 20 | 5 | 3 | 1x4 | 1551 | 3875 | 39 |
| SCI02504-4 | 25 | 4 | 2.381 | 40 | 40 | 9 | 15 | 3 | 1.5 | 1x4 | 1180 | 3795 | 43 |
| ★ SCI02505-4 | | 5 | 3.175 | 40 | 45 | 9 | 20 | 5 | 3 | 1x4 | 1724 | 4904 | 45 |
| SCI02510-4 | | 10 | 4.762 | 46 | 85 | 13 | 30 | 5 | 3 | 1x4 | 2954 | 7295 | 51 |
| SCI03204-4 | 32 | 4 | 2.381 | 46 | 40 | 9 | 15 | 3 | 1.5 | 1x4 | 1296 | 4838 | 49 |
| ★ SCI03205-4 | | 5 | 3.175 | 46 | 45 | 9 | 20 | 5 | 3 | 1x4 | 1922 | 6343 | 52 |
| ★ SCI03210-4 | | 10 | 6.35 | 54 | 85 | 13 | 30 | 5 | 3 | 1x4 | 4805 | 12208 | 62 |
| ★ SCI04005-4 | 40 | 5 | 3.175 | 56 | 45 | 9 | 20 | 5 | 3 | 1x4 | 2110 | 7988 | 59 |
| ★ SCI04010-4 | | 10 | 6.35 | 62 | 85 | 13 | 30 | 5 | 3 | 1x4 | 5399 | 15500 | 72 |
| SCI05010-4 | 50 | 10 | 6.35 | 72 | 85 | 13 | 30 | 5 | 3 | 1x4 | 6004 | 19614 | 83 |
| ★ SCI06310-4 | 63 | 10 | 6.35 | 85 | 85 | 13 | 30 | 6 | 3.5 | 1x4 | 6719 | 25358 | 95 |
| ★ SCI08010-4 | 80 | 10 | 6.35 | 105 | 85 | 13 | 30 | 8 | 4.5 | 1x4 | 7346 | 31953 | 109 |

Note: with sign ★ can be produced in left helix

Dimension Table of TBI MOTION BallScrews TYPE DFU (DIN69051 FORM B)



Unit : mm

l: Lead Da: Ball Dia. n: Number of Circuits K: Stiffness (Kgf/μm)
Ca: Basic Dynamic Rating Load (Kgf) Coa: Basic Static Rating Load(Kgf)

| Model No. | Dimensions | | | | | | | | | | | | | | |
|--------------|------------|-------|-------|-----|-----|-----|-----|-----|------|-----|-----|------|-------|-------|-----|
| | d | l | Da | D | A | B | L | W | X | H | Q | n | Ca | Coa | K |
| DFU01604-4 | 16 | 4 | 2.381 | 28 | 48 | 10 | 80 | 38 | 5.5 | 40 | M6 | 1x4 | 973 | 2406 | 43 |
| ★ DFU01605-4 | | 5 | 3.175 | 28 | 48 | 10 | 100 | 38 | 5.5 | 40 | M6 | 1x4 | 1380 | 3052 | 44 |
| ★ DFU01610-3 | | 10 | 3.175 | 28 | 48 | 10 | 118 | 38 | 5.5 | 40 | M6 | 1x3 | 1103 | 2401 | 35 |
| DFU02004-4 | 20 | 4 | 2.381 | 36 | 58 | 10 | 80 | 47 | 6.6 | 44 | M6 | 1x4 | 1066 | 2987 | 51 |
| ★ DFU02005-4 | | 5 | 3.175 | 36 | 58 | 10 | 101 | 47 | 6.6 | 44 | M6 | 1x4 | 1551 | 3875 | 53 |
| DFU02504-4 | 25 | 4 | 2.381 | 40 | 62 | 10 | 80 | 51 | 6.6 | 48 | M6 | 1x4 | 1180 | 3795 | 60 |
| ★ DFU02505-4 | | 5 | 3.175 | 40 | 62 | 10 | 101 | 51 | 6.6 | 48 | M6 | 1x4 | 1724 | 4904 | 62 |
| DFU02506-4 | | 6 | 3.969 | 40 | 62 | 10 | 105 | 51 | 6.6 | 48 | M6 | 1x4 | 2318 | 6057 | 64 |
| ★ DFU02508-4 | | 8 | 4.762 | 40 | 62 | 10 | 120 | 51 | 6.6 | 48 | M6 | 1x4 | 2963 | 7313 | 67 |
| ★ DFU02510-4 | 10 | 4.762 | 40 | 62 | 12 | 145 | 51 | 6.6 | 48 | M6 | 1x4 | 2954 | 7295 | 67 | |
| DFU03204-4 | 32 | 4 | 2.381 | 50 | 80 | 12 | 80 | 65 | 9 | 62 | M6 | 1x4 | 1296 | 4838 | 71 |
| ★ DFU03205-4 | | 5 | 3.175 | 50 | 80 | 12 | 102 | 65 | 9 | 62 | M6 | 1x4 | 1922 | 6343 | 74 |
| DFU03206-4 | | 6 | 3.969 | 50 | 80 | 12 | 105 | 65 | 9 | 62 | M6 | 1x4 | 2632 | 7979 | 78 |
| ★ DFU03208-4 | | 8 | 4.762 | 50 | 80 | 12 | 122 | 65 | 9 | 62 | M6 | 1x4 | 3387 | 9622 | 82 |
| ★ DFU03210-4 | 10 | 6.35 | 50 | 80 | 12 | 162 | 65 | 9 | 62 | M6 | 1x4 | 4805 | 12208 | 82 | |
| ★ DFU04005-4 | 40 | 5 | 3.175 | 63 | 93 | 14 | 105 | 78 | 9 | 70 | M8 | 1x4 | 2110 | 7988 | 87 |
| DFU04006-4 | | 6 | 3.969 | 63 | 93 | 14 | 108 | 78 | 9 | 70 | M6 | 1x4 | 2873 | 9913 | 91 |
| ★ DFU04008-4 | | 8 | 4.762 | 63 | 93 | 14 | 132 | 78 | 9 | 70 | M6 | 1x4 | 3712 | 11947 | 96 |
| ★ DFU04010-4 | 10 | 6.35 | 63 | 93 | 14 | 165 | 78 | 9 | 70 | M8 | 1x4 | 5399 | 15500 | 99 | |
| ★ DFU05010-4 | 50 | 10 | 6.35 | 75 | 110 | 16 | 171 | 93 | 11 | 85 | M8 | 1x4 | 6004 | 19614 | 117 |
| ★ DFU05020-4 | | 20 | 7.144 | 75 | 110 | 16 | 280 | 93 | 11 | 85 | M8 | 1x4 | 7142 | 22588 | 126 |
| ★ DFU06310-4 | 63 | 10 | 6.35 | 90 | 125 | 18 | 182 | 108 | 11 | 95 | M8 | 1x4 | 6719 | 25358 | 139 |
| ★ DFU06320-4 | | 20 | 9.525 | 95 | 135 | 20 | 290 | 115 | 13.5 | 100 | M8 | 1x4 | 11444 | 36653 | 152 |
| ★ DFU08010-4 | 80 | 10 | 6.35 | 105 | 145 | 20 | 182 | 125 | 13.5 | 110 | M8 | 1x4 | 7346 | 31953 | 156 |
| ★ DFU08020-4 | | 20 | 9.525 | 125 | 165 | 25 | 295 | 145 | 13.5 | 130 | M8 | 1x4 | 12911 | 47747 | 187 |
| ★ DFU10020-4 | 100 | 20 | 9.525 | 150 | 202 | 30 | 340 | 170 | 17.5 | 155 | M8 | 1x4 | 14303 | 60698 | 222 |

Note: with sign ★ can be produced in left helix